

Materials & Finishes



LaCOUR®



Material Quality Assurance

At LaCOUR, we maintain exacting standards while acknowledging the inherent characteristics of premium materials. Natural variations in color, texture, and finish are hallmarks of superior materials, influenced by factors including environmental conditions, material origins, and evolving industry standards. Our commitment to excellence drives us to minimize these variations while celebrating the authentic character that makes each piece uniquely sophisticated.

Table of Contents

Design Elements

Environmental Leadership

Sustainable Wood Laminates

Our partnership with industry-leading manufacturers supports multiple LEED certification opportunities:

- Recycled Content Integration
- Regional Material Sourcing
- Rapidly Renewable Resources
- Certified Wood Programs
- Low-Emission Composite Materials
- Low-Emission Furniture Systems

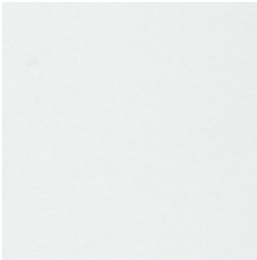
Eco-Conscious Textiles

Our designer panel fabrics exemplify our commitment to environmental stewardship, featuring:

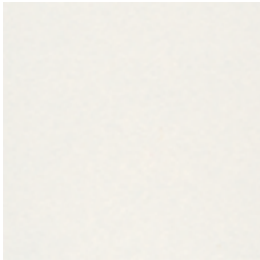
- Carbon-neutral manufacturing processes
- 100% recycled polyester composition (35% post-consumer, 65% pre-consumer)
- Full carbon offset certification

Solid Laminate Finishes

Formica®



Brite White
459-58 (2MM & 3MM)



Dover
7197-58 (2MM & 3MM)

Wilsonart®



Designer White
D351-60 (2MM & 3MM)



Antique White
1572-60 (2MM & 3MM)



Beige
1530-60 (2MM & 3MM)



Fashion Grey
D381-60 (2MM & 3MM)



Grey
1500-60 (2MM & 3MM)



Cement
D503-60 (2MM & 3MM)



Pewter
D73-60 (2MM & 3MM)



North Sea
D90-60 (2MM & 3MM)



Slate Grey
D91-60 (2MM & 3MM)



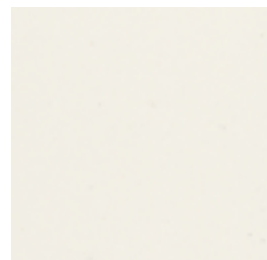
Black
1595-60 (2MM & 3MM)

Formica® Fenix Soft Touch Laminates

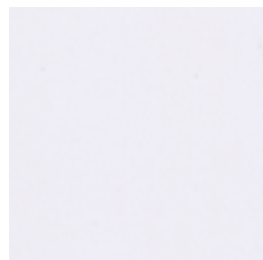
Wilsonart® Traceless Laminates



Blanco Kos
J0032 (2MM & 3MM)



Blanco Male
J0029 (2MM & 3MM)



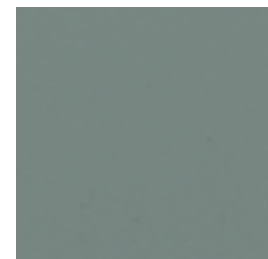
Blanco Alaska
J0030 (2MM only)



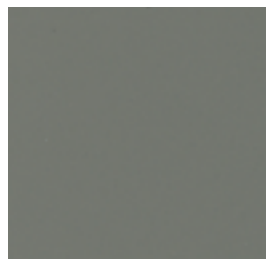
Grigio Efeso
J0752 (3MM only)



Beige Arizona
J0748 (2MM & 3MM)



Grigio Antrim
J0752 (3MM only)



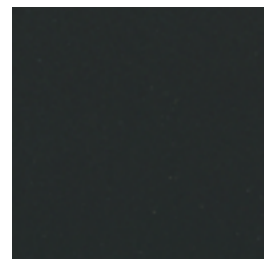
Grigio Londra
J0718 (2MM & 3MM)



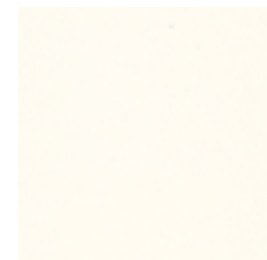
Grigio Bromo
J0724 (2MM & 3MM)



Verde Commodore
J0750 (3MM only)



Nero Ingo
J0720 (2MM & 3MM)



Snow White Velvet
15501 (2MM & 3MM)



Designer White Velvet
15512 (2MM & 3MM)



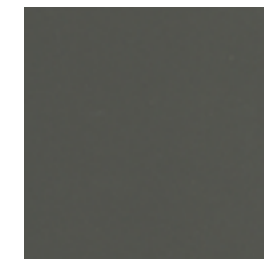
Icecap Velvet
15516 (3MM only)



Pewter Velvet
15508 (3MM only)



Charcoal Velvet
15504 (3MM only)



Slate Velvet
15507 (3MM only)



Midnight Velvet
15506 (3MM only)



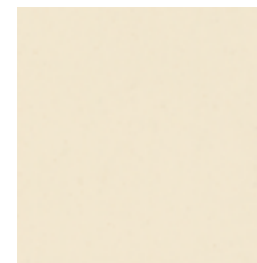
Black Velvet
15505 (2MM & 3MM)

Vinyl Edge Banding

Vinyl Edge Banding

(All standard laminates on previous pages have matching edge banding in either 2 or 3 mm)

Molded Edging (Polyurethane)



320 Antique White



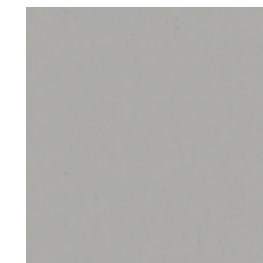
090 Light Beige



007 Pepperdust



343 Light Grey



387 Innertone Light



376 Dolphin



338 Cool Grey



026 Shaker Grey



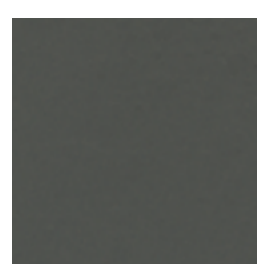
385 Slate Grey



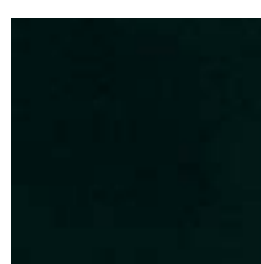
347 Moonshadow



379 Quarry



008 Graphite



300 Black



Woodgrain Laminates

Formica®



White Washed Birchply
6372 (3MM)



Buff Elm
5793 (2MM & 3MM)



Fox Teakwood
8907 (2MM & 3MM)



Storm Teakwood
8909 (2MM & 3MM)



Black Riftwood
6414 (2MM & 3MM)



Chelsea Maple
9238 (2MM & 3MM)



Cognac Maple
7738 (2MM & 3MM)



Cherry Heartwood
9240 (2MM & 3MM)



Walnut Butcher Block



Kona



Carmel Elm
5795 (2MM & 3MM)

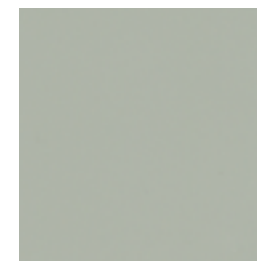


Walnut Riftwood
9283 (2MM & 3MM)

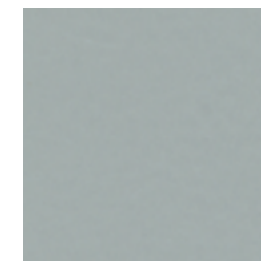
Powder Coats



Designer White



Silk Grey
RAL7044



Silver
RAL9006



Concrete Grey
RAL7023



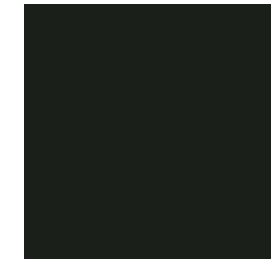
Traffic Grey
RAL7042



Cement Grey
RAL7033

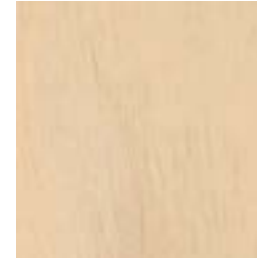


Basalt Grey
RAL7012



Black
RAL9005

Wood Veneers



Flat Cut Maple



**Quarter
Planked oak**



**Quarter
English Oak**



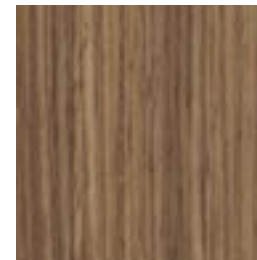
Quarter Light Ash



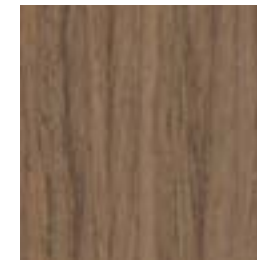
**Flamed White Oak
(ALPI Xilo 2)**



**Planked Silver
Grey Oak**



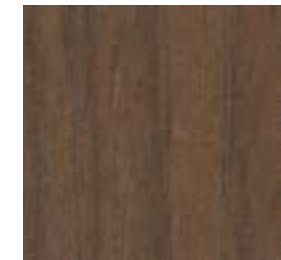
Australian Walnut



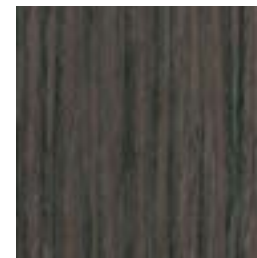
European Walnut



**Xilo Noce Italiano
Flamed Walnut**



Xilo Flamed Walnut



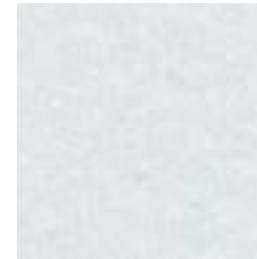
Quarter Grey Oak



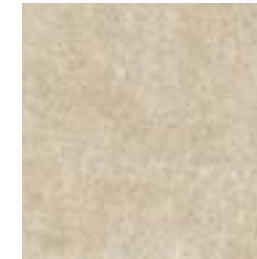
Ebony

Felt Acoustic Panels

Zintra



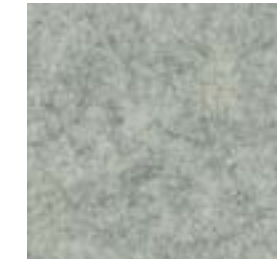
White Frost



Cream/Linen



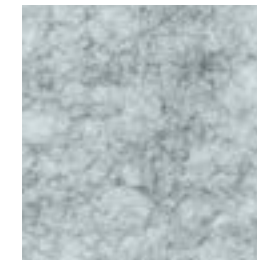
Taupe/Ecru



Pebble



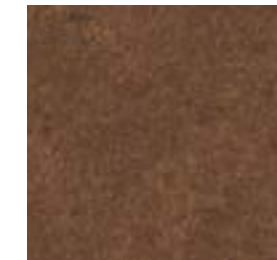
Periwinkle/
Chambray



Silver/Smoke



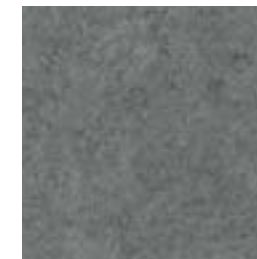
Cadet



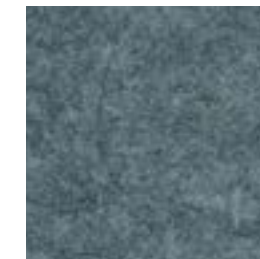
Cocoa/Bark



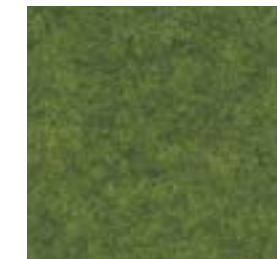
Greige



Fossil



Grey/Pewter



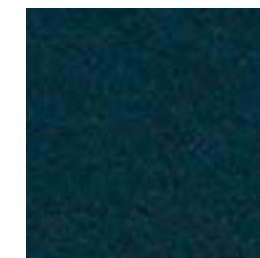
Olive



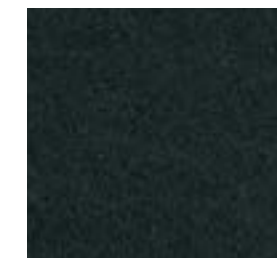
Malachite



Ash/Slate



Midnight



Black/Tar

Designtex® Fabrics

GAMUT (\$29 per yd.)



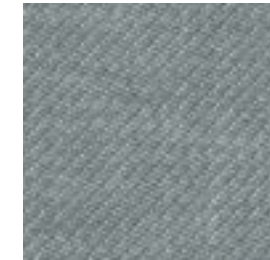
Mist
3468-801



Oat
3468-108



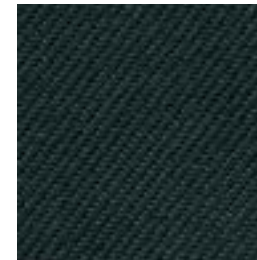
Stone
3468-806



Shale
3468-813



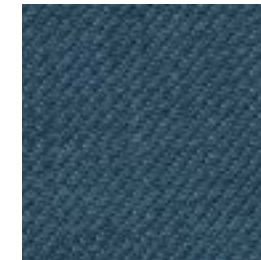
Grey
3468-814



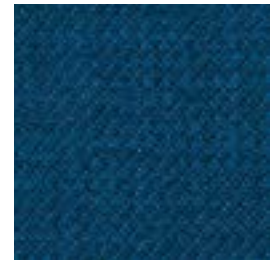
Carbon
3468-812



Blue Heather
3468-411



Cadet
3468-409

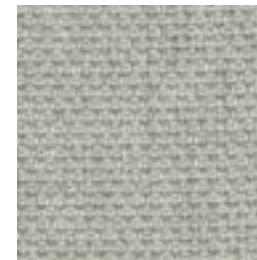


Navy
3468-407

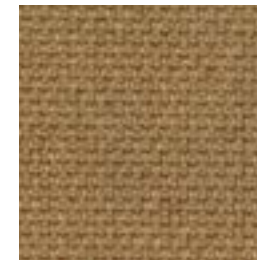


Port
3468-305

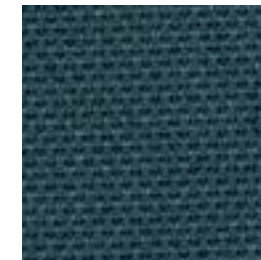
BIRDSEYE (\$34 per yd.)



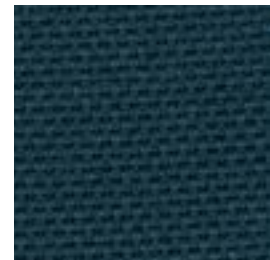
Light Mocha
4142-101



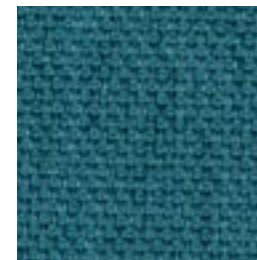
Antique Brass
4142-201



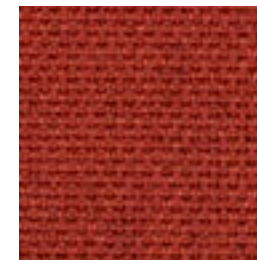
Regal Blue
4142-405



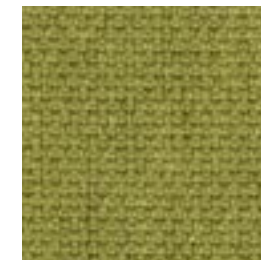
Black Indigo
4142-406



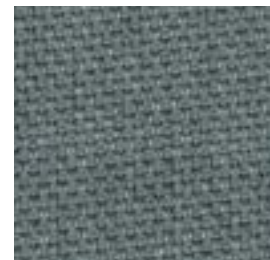
Blue Coral
4142-404



Cayenne
4142-702



Green Sprout
4142-502

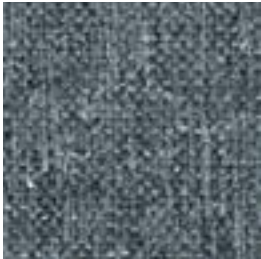


Slate
4142-803

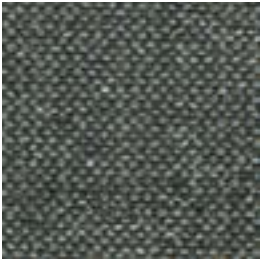
MACKINTOSH (\$39 per yd.)



Parchment
3025-801



Mason
3025-804



Forge
3025-104



Seastone
3025-403



Celestial
3025-406

SIDETRACK (\$43 per yd.)



Oat
3026-101



Birch
3026-802



Berry
3026-303



Charcoal
3026-803



Aegean
3026-404

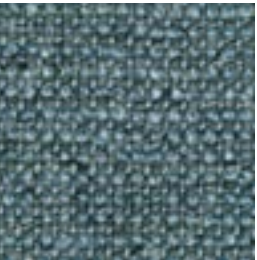
ARNE (\$43 per yd.)



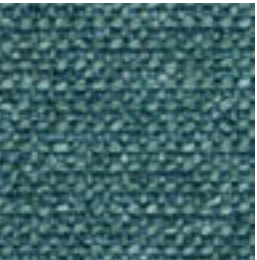
Flax
4141-102



Bran
4141-101



Blue Grey
4141-102



Dark Teal
4141-405



Denim
4141-403

REPPWEAVE (\$46 per yd.)



White
3747-101



Snap Pea
3747-501



Pumice
3747-103



Medium Blue
3747-401



Red Orange
3747-701



Wine
3747-301



Dark Charcoal
3747-803

MÉLANGE (\$49 per yd.)



Sand
3492-104



Birch
3492-101



Nutmeg
3492-102



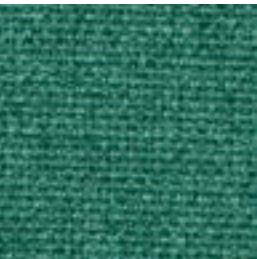
Iron
3492-802



Denim
3492-407



Sea
3492-405



Juniper
3492-507



Moss
3492-503



Canyon
3492-702

EVERYWHERE TEXTURE (\$53 per yd.)



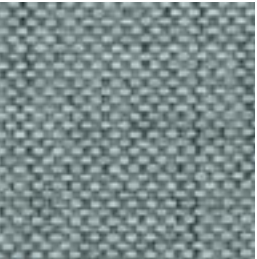
Frost
4147-801



Shell
4147-102



Stone
4147-104



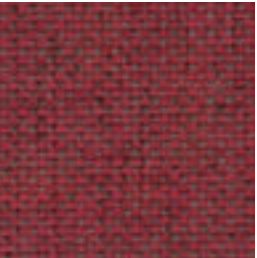
Smoke
4147-804



Storm
4147-408



Twilight
4147-411

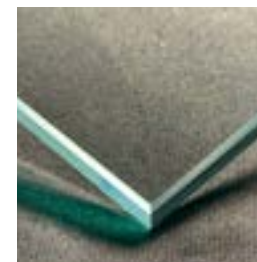


Zinger
4147-305

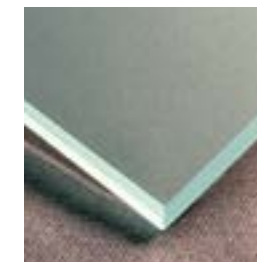


Evergreen
4147-510

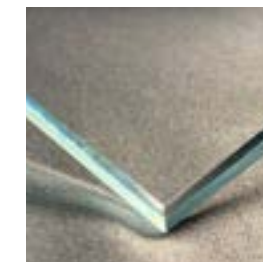
Glass and Acrylic



Clear Glass



Single Sided Acid Etched Glass



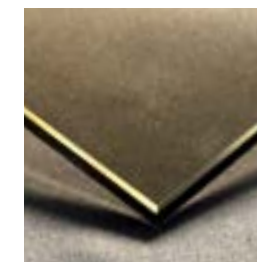
Low Iron Glass



Single Sided Acid Etched on Low Iron Glass



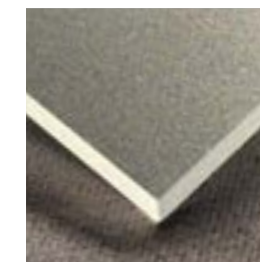
Solar Gray Glass



Bronze Glass



Back Painted Magnetic Glass (white)



Frosted Acrylic

Maintenance and Cleaning

LaCOUR furnishings represent the perfect blend of artistry and functionality, with premium materials selected for their aesthetic appeal, durability, and performance. With proper care, these materials will maintain their beauty for years to come, ensuring your spaces remain as impressive as the day they were designed. Our commitment to quality extends beyond the creation of our products to their ongoing care, providing you with expert recommendations for maintaining the various materials used in LaCOUR furnishings, helping you protect your investment while preserving its distinctive character.





BEYOND THE STATUS QUO

Showroom & Sales

New York Design Center®
200 Lexington Avenue, Suite 1401
New York, New York 10016
212.213.6600

Headquarters & Plant Operations

36–38 Kulick Road
Fairfield, New Jersey 07004

info@lacourinc.com

lacourinc.com

While we strive for accuracy in our printed materials, natural variations in materials and printing processes may cause slight differences between the finishes shown here and physical samples – we invite you to experience our materials in person to appreciate their true beauty and quality.